

MCJ

Insurance Agency, Inc.

Michael C. Jones
Tel: 978.338.4670

AUTO - HOME - BUSINESS - LIFE



Good Food, Drink & Fun
241 Jefferson Ave. Salem MA
www.tinwhistlesalem.com • 978-741-1912



Walter W Hartford, CFA
Financial Advisor
55 Market Street
Suite 102
Ipswich, MA 01938-2262
978-356-3002

Edward Jones
MAKING SENSE OF INVESTING
edwardjones.com

Desjardins

JEWELERS

978-922-2149

Commodore Plaza,
47 Enon Street
Beverly, MA 01915-3601



Matthew H. Piaker,
JD, LLM, AIF®
Tel: 978-927-3123
Email: mpiaker@cfaemail.com
100 Cummings Center, Ste. 207P
Beverly, MA 01915
www.capitolfinancialadvisors.com

Securities and Advisory Services offered through Commonwealth Financial Network. Member FINRA/SIPC. Advisory services offered by Capitol Financial Advisors, a registered investment adviser, are separate and unrelated to Commonwealth.



New member



Proposed members



To help clarify who are these new people at meetings we give you a sample. At left is Johnson Obeke **NEW MEMBER**, below him are proposed new members: Annie McClelland of McLelland Del Rio Group a corporate member. Rounding out bottom pick is Andre Fluery from North Shore bank.

Strangely enough the proposed sat at the rowdy lower middle age table and caused quite a ruckus.

Is this the kind of people we want? **YES, YES, YES** - Meg Ryan

Wear a mask observe all safety protocols and say hi to these folks.



Last weeks Speaker

Chris Haight gave us the lowdown on all things cybersecurity and from the dark arts of hacking. Mosty human error (go figure) is cause for many of the successful scams that bombard you daily through email, texts and other ways to separate you from your stash, and we don't mean pot. Best advice be wary of anything remotely suspicious, which could start by blocking emails form moiph@comcast.net from its weekly invasion to your inbox. You have been warned my fellow Rotarians and suckers!!!

Looking for relics like Yaffa

We are looking for items to put into a time capsule box for our 100th year anniversary. Could be some trinket or photo or item that shows what is the cut of our jib. We have some items but looking for more. Perhaps an award when you were president or some other honor. We are trying to score a Yaffa scarf from his extensive collection. If you have something ANYTHING, contact moiph for collection and history.

Montserrat College of Art
where creativity works®
visual art & design education
continuing education for all ages
public art galleries
beverly, ma | montserrat.edu

TEMKIN
FINANCIAL GROUP, LLC
Alan L. Temkin
Financial Planner
781-876-4175
atemkin@temkinfinancial.com
www.temkinfinancial.com
301 Edgewater Place, Suite 200
Wakefield, MA 01880
Alan L. Temkin is a registered representative of and offers securities, investment advisory and financial planning services through MML Investors Services, LLC. Member SIPC. Temkin Financial Group, LLC is not a subsidiary or affiliate of through MML Investors Services, LLC, or its affiliated companies. 200 Clarendon Street, 19th and 25th Floor, Boston, MA 02116. 617-585-4500. CRN202111-256179



SERVE TO CHANGE LIVES

BEVERLY ROTARY CLUB SPROCKET NEWSLETTER

Jan 20, 2022
Issue 25

Coming Up

Jan 20
John Paddol
Beverly Rec Department

Jan 27
Dr. Andre Morgan
DEI Officer, Beverly

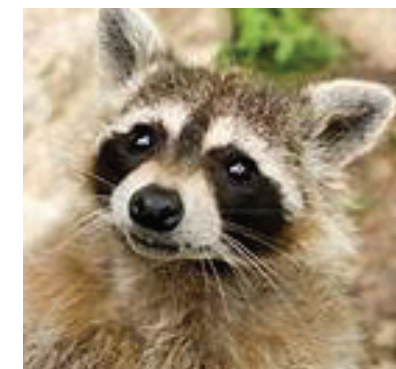
Feb 3
Jared Bowers
Long Hill Property

Feb 10
Kenann MacKenzie
Challenges Social Equity



MASKS BACK IN TOWN

SINCE YOU NEED A MASK GO ALL OUT WILL YA!



I typically wear a mask in public and in print, but wanted to show you the inner glow and effervescence of my natural beauty and id. Enjoy the cavalcade of masked people.



Pay for lunch, happy dollars, or just a good old donation. Keep the dream alive
<http://bit.ly/Rotaryfineshappydollars>

Eagle Strategies LLC **NEW YORK LIFE**

Edward F. Cahill, J.D., CFP®, CLU®, ChFC®
Financial Adviser

(978) 927-9352 • 306 Cabot Street, Beverly, MA 01915
ecahill@ft.newyorklife.com • www.edwardfcachill.com

Agent, New York Life Insurance Company.
Registered Representative, offering securities through NYLIFE Securities LLC,
Member FINRA/SIPC, a Licensed Insurance Agency
201 Jones Road, Fifth Floor, Waltham, MA 02451 • Tel: 781-647-4100
Eagle Strategies and NYLIFE Securities are New York Life Companies

MG The Mega Group
Commercial Real Estate

BRIAN DAPICE & ASSOCIATES LLC

BEVERLY 978-922-6400 **DANVERS** 978-762-9771

www.TheMegaGroup.net

Specializing in
Retail Sales & Leasing, Developable Land
and Multi-Family Investments

CCI Reprographics

A Full Service Copy Center
AV Rentals & Services

Serving Beverly Since 1979

Alex Ushakoff III - owner
4th generation Rotarian

110 Cabot Street 978-922-3773
Alex@CCIREpro.com

The leading provider of custom-designed
workforce training programs.

NORTH SHORE COMMUNITY COLLEGE

Corporate Training SOLUTIONS Train your people. Transform your company.

Dianne Palter Gill, Ed.D.
978-236-1225
dpalterg@northshore.edu

corporate.northshore.edu

True to our Communities

We are proud to support the
Beverly Rotary Club

Eastern Bank

Last meeting news, Thursday Jan 13, 2022

Hybrid In Person/Zoom Meeting
Called to Order by Madame President
at 12:16 PM

Pledge of Allegiance led by
Sean Goudreau

Song:

America the Beautiful

Guests and Vistors:

Kyle Marsh & Annie McClelland;
several members were visiting us from
sunnier locations as well via Zoom

Birthdays:

Neiland Douglas & Dylan Jones;
neither present

Invocation:

Thad Siemasko

Announcements:

Congrats to Matt & Stephanie
Blanchard on the birth of their daugh-
ter Charlee Marie on January 7, 2022!
All are well!

Number of prospective members in
the membership pipeline

Sarah MacBurnie-Liporto-new mem-
bership class will be coming before the
club for a vote; work project mem-
bership category; board voted unani-
mously to adapt; will help with DEI
opportunities

Leslie Gould-Interact Club Event; re-
scheduled to February 17th; thanks to
sponsors, Temkin Financial, Glovsky &
Glovsky, Sterling Insurance, Marble-
head Bank, GBCC

Prosepctive new members:

- Nicolas Pirrotta
- John Kenney
- McLelland Del Rio Group (Louisa
Delrio and Annie McLelland.)
- Linda Turcotte
- Paul Guanci

Sergeant-Mike Jones

Happy \$-
Brad Hunt-happy to be back

Moiph - Dr. Jamie being named new
president of Beverly Main Streets thus
giving Brenda back to him(if she'll have
him!)

Al Temkin via Zoom-MJ as Sergeant

Bill Beckman-Soon jumping into the
pool

Make your Dreams Come True Day
Various fines for specific dreams com-
ing true (Dr. Jamie-trash barrels on
Rantoul; Bob Murphy-opening credits;
Jackie Rap-maskless at NSMT just to
name a few)

Speaker- Chris Haight

Scared the living sh** out of all pres-
ent regarding digital hacks and security
Never click on something you are not
expecting

No such thing as a nice surprise any-
more

No Raffle Winner

Meeting Adjourned: 1:31 PM

Respectfully your Scribe,
Ozzie

MOVED TO FEB 17th

Thursday January 20th

**Business After Hours with
The Beverly Rotary Club &
The Student Interact Club**

Danversport - 5:00 to 7:00pm

Students will be able to experience networking with
professionals in the community as well as have the
opportunity to find internships with local buinesses.

Appetizers and Sandae bar • Complimentary Soda & Water • Cash Bar

Sponsorship Opportunities:

Exclusive- \$1500 Welcome Introduction Your Logo Headlines All Pre/Post Media Photos with Students	Silver – Seeking 8 \$500 Your Logo on All Pre/Post Media Photos with Students
--	--

**The event is expecting 200 students
and professionals to participate!**

RSVP at GreaterBeverlyChamber.com

The Swierczynski Swizzle Schtick

Growing up in the bucolic Vermont town of Springfield, home to the Comtu Cascade Park and cheering on the Cosmos (High School Mascot was a drink!), I always dreamed of following in the footsteps of native son Alban J. Parker, Vermont Attorney General 1941-1947, when I was thrust into a situation that would be a landmark decision for me! Town heart throb Purley H. Smigglesworth asked me on a date, and I was a giddy as a school girl (which I was at the time 10th grade). He picked me up in an AMC Pacer in light tan and we drove to inspiration point to view the hills around our town. Purley put on the radio and Meatloaf's song, Paradise by the Dashboard light came on. I looked into those deep blue eyes of Purley and my future life passed before me: barefoot and pregnant with our 5th child living in a trailer down by the Connecticut River, Purley working at the paper mill, and my dad coming by from time to time making a guttural sound like Lurch from Addams Family about my situation. Purley started to lean towards me and I put on the brakes before he got to first base. I told him I'm destined for more than this one horse town, and plan to move to Massachusetts and thrive in a two horse town. Perhaps be a lawyer of distinction, a Rotary President, or even Mayor! I told Purley take me home and he was a perfect gentleman dropping me off as my dad puffed on his pipe on the front porch. In honor of my landmark decision have a "Cosmo" On me. 1.5 oz. Ketel One Citroen Flavored Vodka, .75 oz. cranberry juice, .75 oz. fresh lime juice, .25 oz. simple syrup. Combine ingredients in a mixing glass. Shake with ice and strain into a coupe glass. Garnish with a lemon twist. And if that song ever comes up, RUN AS FAST AS YOU CAN AWAY FROM IT. Postscript Purley works at papermill.



STERLING
INSURANCE AGENCY, INC.

Established in 1929 & Still Growing!
Auto • Home • Business • Health • Life

Richard F. Mooney Jr.
president

306 Cabot Street, Beverly, MA
(978) 922-6600

Beverly Insurance
100 Cummings Center
Suite 106N

Personal and Business
Insurance

978-524-8501
email:mike@beverlyins.com

**Helping Local
Businesses Thrive.**

To contact one of our commercial
lenders call (978) 573-1300 or visit
northshore-bank.com/lenders.

NORTH SHORE BANK
Well north of your expectations.™
northshore-bank.com |
Member FDIC Member DIF Equal Housing Lender

SHUKA
Associates Inc.

Real Estate Appraisal Review & Consulting

John A. Shuka, MAI, SRA, AI-GRS

Shuka Associates Inc.
8 Enon Street, Suite 1B
Beverly, MA 01915
978-921-1700
www.shuka-associates.com

afc
american family care
URGENT CARE

50 DODGE STREET, BEVERLY MA 01915
978.922.2171 | AFCUrgentCareBeverly.com

450 PARADISE RD, SWAMPSCOTT, MA 01907
781.691.9366 | AFCUrgentCareSwampscott.com